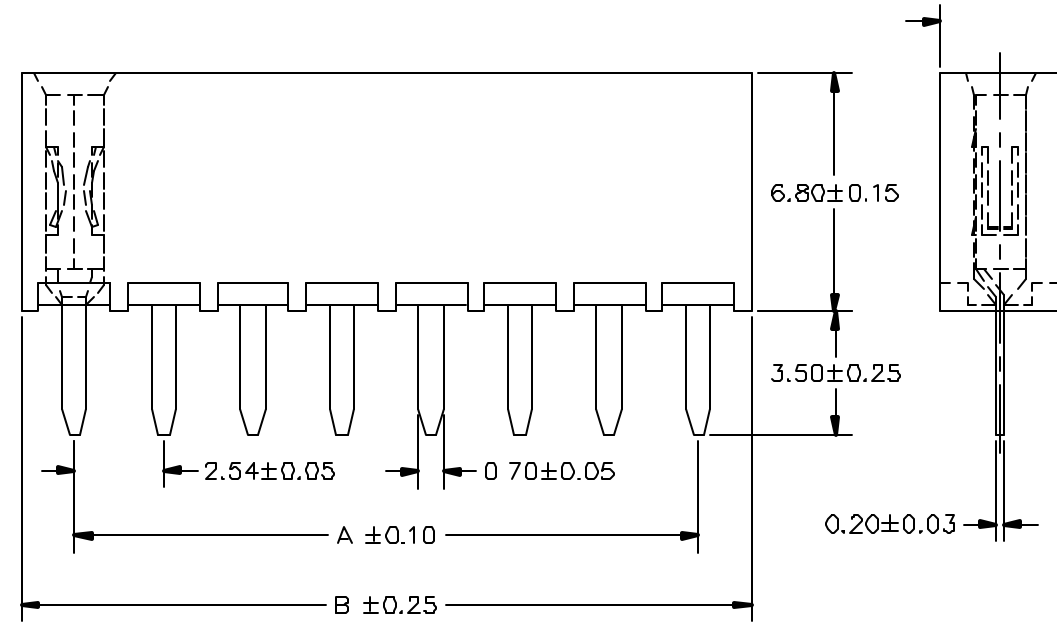
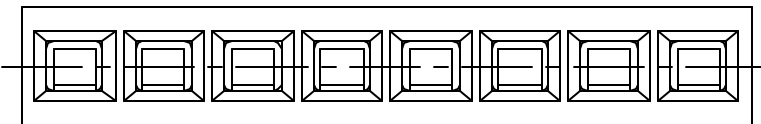


No. of Contacts	DIMENSIONS	
	A	B
3	5.08	8.12
4	7.62	10.66
5	10.16	13.20
6	12.70	15.74
7	15.24	18.28
8	17.78	20.82
9	20.32	23.36
10	22.86	25.90
11	25.40	28.44
12	27.94	30.98
13	30.48	33.52
14	33.02	36.06
15	35.56	38.60
16	38.10	41.14
17	40.64	43.68
18	43.18	46.22
19	45.72	48.76
20	48.26	51.30
21	50.80	53.84
22	53.34	56.38
23	55.88	58.92
24	58.42	61.46
25	60.96	64.00
26	63.50	66.54
27	66.04	69.08
28	68.58	71.62
29	71.12	74.16
30	73.66	76.70
31	76.20	79.24
32	78.74	81.78
33	81.28	84.32
34	83.82	86.86
35	86.36	89.40
36	88.90	91.94
37	91.44	94.48
38	93.98	97.02
39	96.52	99.56
40	99.06	102.10

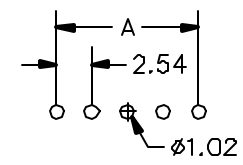
*Product specifications are subject to change without notice. Please contact sales office for further confirmation.

SPECIFICATIONS

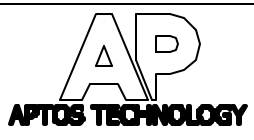
Current Rating: 3 Amps
 Insulator resistance: 5000 Megohms min.
 Contact resistance: 20 m ohms max.
 Dielectric withstanding: AC 1000 V
 Operating Temperature: -40°~+105°C
 Contact Material: Phosphor bronze
 Insulator Material: Polyester, UL 94V-0
 ©Standard: P.B.T
 Finish: Gold flash all over
 ©Standard: Gold flash all over



Recommended P.C.Board Hole Layout



△ PFF1-XXS -XXX-3.5	→ PFFY-XXS -X-035	27-04-01'
------------------------	----------------------	-----------



GENERAL TOLERANCE		SCALE 5=1	DRAWN	DATE -04-01'	DWG. NO.	TITLE	REV. 1.1
XX. ±	XXX. ±	UNIT MM	CHECK	DATE -04-01'	F:\DWG\CDWG\PFF\PFFYS0A.DWG	PFFY Series	SHEET 1/2
X. ±	.XXX ±	SIZE A4	APPROVE	DATE -04-01'	PFFY-XXS-X-035		
.X ±	X. ±						
XX ±	.X ±						