

# .079" (2.0mm) Female Header

## Quad Row, Board to Board Connector

### 120 Contacts, Straight

#### APPLICATION AND FEATURES

1. Low Profile: 6.3mm height.
2. High quality phospher bronze contacts.
3. Designed for board to board small spacing interconnection.
4. Standoffs facilitate post soldering clean.
5. Mating with 2.0mm pitch □ 0.5mm Pin Headers.

#### SPECIFICATIONS

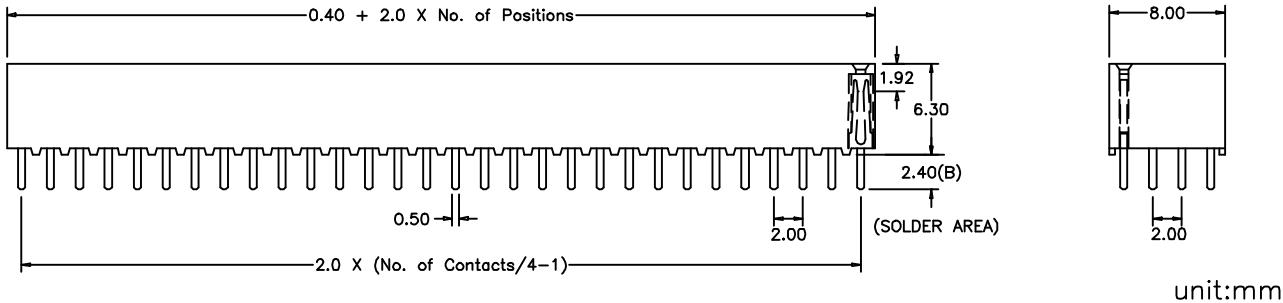
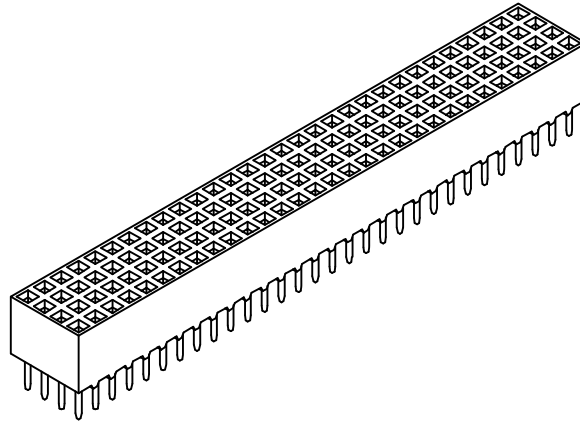
Current Rating: 1 Amp  
 Insulator resistance: 5000 Megohms min.  
 Contact resistance: 20 m ohms max.  
 Dielectric withstanding: AC 500 V  
 Operating Temperature: -40°~+105°C  
 Max Processing Temp: 230° for 30 seconds  
 Contact Material: Phosphor Bronze.  
 Insulator Material: Polyester, UL 94V-0  
 ◎Standard: Nylon-6T

Finish: Tin, Gold or Duplex plated

◎Standard: Duplex plated

◎Note:

Duplex plating: gold plated on contact area,  
 Tin on solder area



#### How to order

Please replace "X" with appropriate coding listed in the tables below

OLD P/N / NEW P/N  
 (PQF4) **P Q F** - **X X X** - **X** - 024

#### Number of Contacts

No. of contact = Code
24 to 96 Contacts
100 Contacts = A0
104 Contacts = A4
108 Contacts = A8
112 Contacts = B2
116 Contacts = B6
120 Contacts = C0

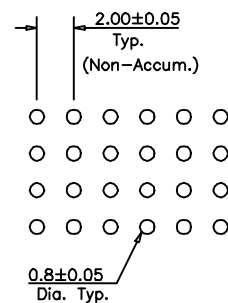
#### Connector Type

Definition	Code
Straight	S

#### Contact Plating

Definition	Code
◎ Tin plated:	A
◎ Gold plated:	
flash B 15μ"	F
10μ" E 30μ"	J
◎ Duplex plating:	
flash K 15μ"	P
10μ" N 30μ"	U
◎Standard: K	

#### Recommended P.C.Board Hole Layout



APTOS Technology - (831)-688-0881