

No. of Contacts	DIMENSIONS	
	A	B
4	7.62	10.66
5	10.16	13.29
16	38.10	41.14

SPGFAY-XX-BX-X
 Number of Contacts | Contact Plating
 B1 TYPE |
 B2 TYPE |

Definition		Code	
① Tin plated:		A	
② Gold plated:			
flash	B	15μ"	F
10μ"	E	30μ"	J
③ Standard: B			

SPECIFICATIONS

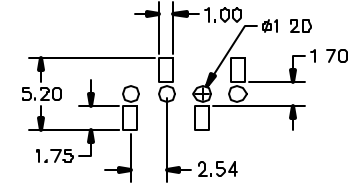
Current Rating: 3 Amps
 Insulator resistance: 5000 Megohms min.
 Contact resistance: 20 m ohms max.
 Dielectric withstanding: AC 1000 V
 Operating Temperature: -40~+105°C
 Contact Material: Phosphor bronze
 Insulator Material: Polyester, UL 94V-0
 ◎Standard: Nylon-6T

Finish: Tin, Gold or Duplex plated
 ◎ Standard: Gold flash all over
 ◎ Note:
 Duplex plating: gold plated on contact area, Tin on solder area
 *Product specifications are subject to change without notice. Please contact sales office for further confirmation

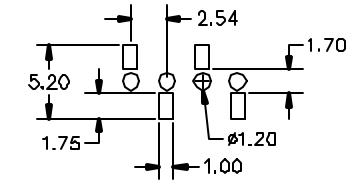
Recommended P.C.Board

SMD Layout

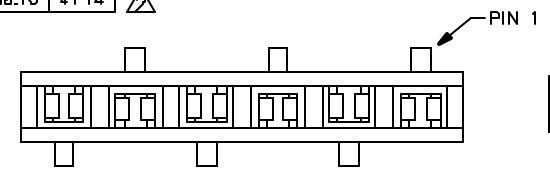
B2 Type



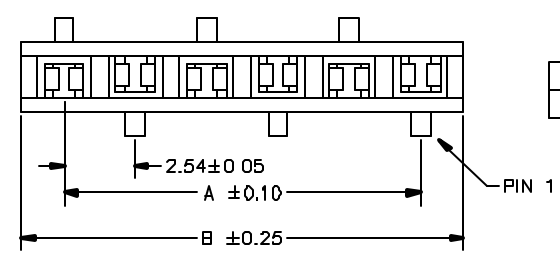
B1 Type



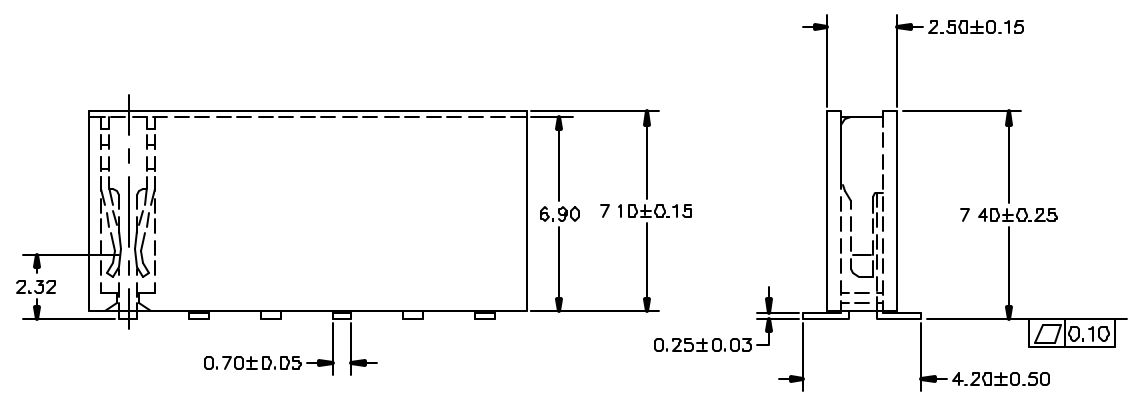
△ SPGFA1-XX -BX-XXX	VERSION	SPGFAY-XX -BX-X	05-07-01'
△ 新增PIN数	VERSION	如圖所示	31-10-01'



B2 Type



B1 Type



GENERAL TOLERANCE		SCALE	4=1	DRAWN	DATE	-10-01'	DWG. NO.	TITLE	REV.
XX. ±	XXX. ±	UNIT	MM	CHECK	DATE	-10-01'	F:\DWG\CDWG\PGFA\PGFAYMOA.DWG	SPGFAY Series	1.2
X. ±	.XXX ±	SIZE	A4	APPROVE	DATE	-10-01'	PARTS NO. SPGFAY-XX-BX-X		SHEET 1/2
.X ±	X. ±								
.XX ±	.X ±								