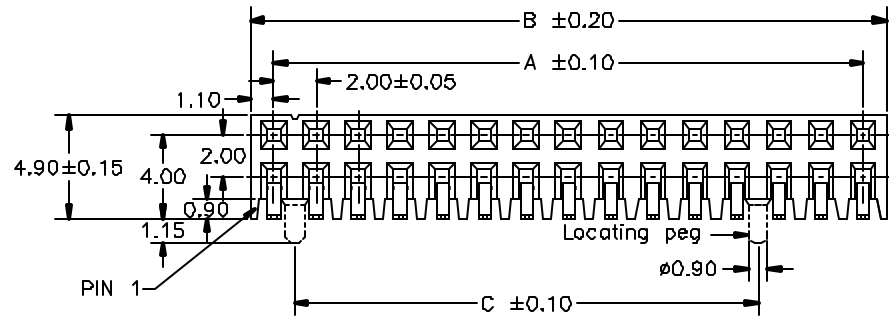
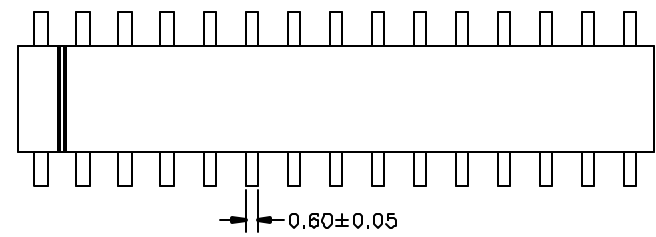
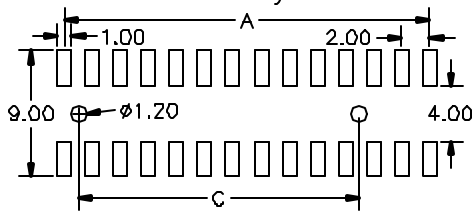


No. of Contacts	DIMENSIONS		
	A	B	C
12	10.00	12.20	2.00
14	12.00	14.20	4.00
16	14.00	16.20	6.00
18	16.00	18.20	8.00
20	18.00	20.20	10.00
22	20.00	22.20	12.00
24	22.00	24.20	14.00
26	24.00	26.20	16.00
28	26.00	28.20	18.00
30	28.00	30.20	20.00
32	30.00	32.20	22.00
34	32.00	34.20	24.00
36	34.00	36.20	26.00
38	36.00	38.20	28.00
40	38.00	40.20	30.00
42	40.00	42.20	32.00
44	42.00	44.20	34.00
46	44.00	46.20	36.00
48	46.00	48.20	38.00
50	48.00	50.20	40.00

Recommended P.C.Board SMT Layout



SPECIFICATIONS

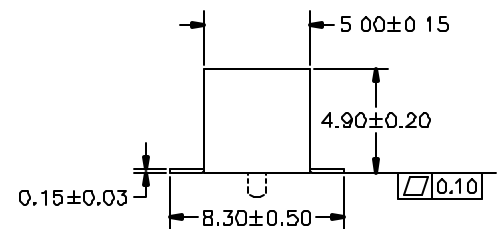
Current Rating: 1 Amp
 Insulator resistance: 5000 Megohms min
 Contact resistance: 20 m ohms max.
 Dielectric withstanding: AC 500 V
 Operating Temperature: -40°~+105°C
 Max Processing Temp: 230° for 30 seconds
 Contact Material: Phosphor Bronze,
 Insulator Material: High Temperature Thermoplastic, UL 94V-0

Finish: Tin, Gold plated
 ◎ Standard: Gold flash all over

*Product specifications are subject to change without notice. Please contact sales office for further confirmation.

SPTCZ-XX-X-X
 Number of Contacts: XX
 Contact Plating: X
 0:W/D Polarization Bump
 1:With Polarization Bump

Definition	Code
● Tin plated:	A
● Gold plated:	
flash B	15μ" F
10μ" E	30μ" J
◎ Standard:	B



△ δT±ε	VERSION	plδU	15-11-01'
△ SPTCZ-44	VERSION	SPTCZ-XX	15-11-01'
-XXX-X		-X-X	

	GENERAL TOLERANCE		SCALE 3=1	DRAWN	DATE -11-01'	DWG. NO.	TITLE SPTCZ Series	REV. 1.1
	XX. ±	XXX. ±	UNIT MM	CHECK	DATE -11-01'	F:\DWG\CDWG\PTCZ\PTCZMOA.DWG		SHEET 1/2
	.X ±	.XXX ±	SIZE A4	APPROVE	DATE -11-01'	PARTS NO. SPTCZ-XX-X-X △		
	.X ±	.X ±						