

.079" (2.0mm) Female Header SMD

Dual Row Board to Board Connector

6 to 60 Contacts

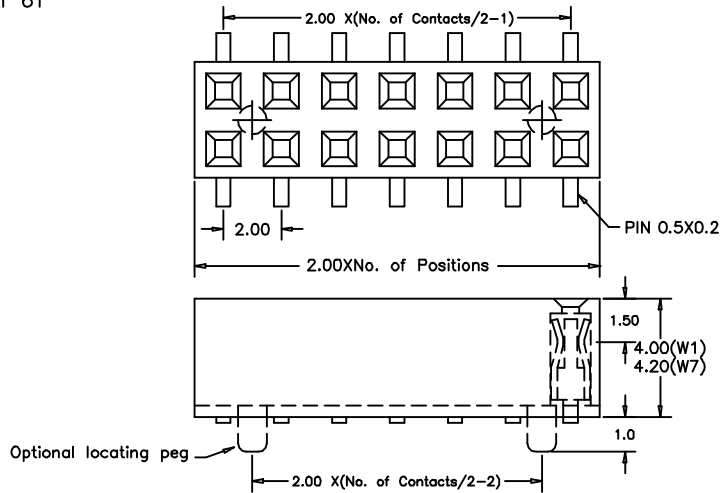
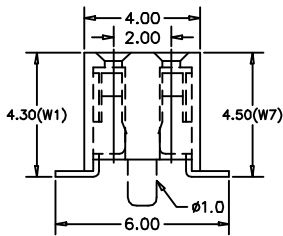
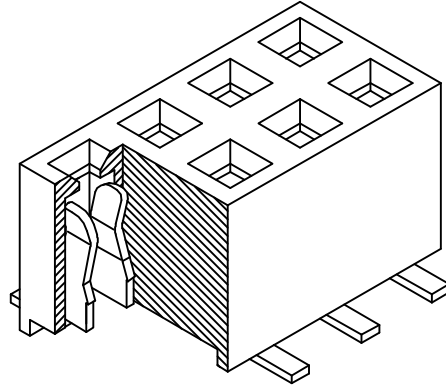
APPLICATION AND FEATURES

1. Low profile: 4.3mm or 4.5mm height.
2. High quality dual beam phosphor bronze contacts.
3. Designed for board to board small spacing interconnection.
4. Mating with 2.0mm pitch □ 0.5mm Pin Headers.

SPECIFICATIONS

Current Rating: 1 Amp
 Insulator resistance: 5000 Megohms min.
 Contact resistance: 20 m ohms max.
 Dielectric withstanding: AC 500 V
 Operating Temperature: -40°~+105°C
 Max Processing Temp: 230° for 30 seconds
 Contact Material: Phosphor Bronze.
 Insulator Material: Polyester, UL 94V-0
 ©Standard: Nylon 6T

Finish: Tin, Gold plated
 ©Standard: Gold flash all over



unit:mm

How to order

Please replace "X" with appropriate coding listed in the tables below

OLD P/N / NEW P/N
 (SPTF2) S P T F Z - X X X X - X - X — 0:W/O Locating peg
 1:With Locating peg

Number of Contacts

No. of contact = Code
06 to 60 Contacts

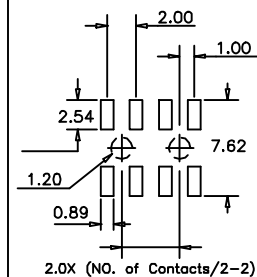
Connector Type

Definition	Code
Height 4.3mm	W1
4.5mm	W7

Contact Plating

Definition	Code
© Tin plated:	A
© Gold plated:	
flash	B
15μ"	F
10μ"	E
30μ"	J
©Standard:	B

Recommended P.C.Board SMT Layout



APTOS Technology - (831)-688-0881